

Bass Trombone

# Symphony, "Implausible" I

Kyle Gann  
2014

♩ = 49

27

Trpts  
*mf* *f*

Measures 27-32: Bass Trombone part. Measure 27 is a whole rest. Measures 28-32 contain a melodic line with dynamic markings *mf* and *f*. The staff includes a treble clef for the first measure and a bass clef for the rest. Time signatures change from 4/4 to 2/4, then 3/8, 6/8, and 4/4.

33

17

Bsn

Measures 33-49: Bass Trombone part. Measure 33 is a whole rest. Measures 34-49 contain a melodic line with a triplet in measure 38 and dynamic markings *f* and *mf*. The staff includes a bass clef. Time signatures change from 4/4 to 5/4, then 4/4, 3/4, and 2/4.

54

Ob. 1

3

Trom 1

9

*mp* *f*

Measures 54-66: Bass Trombone part. Measure 54 is a whole rest. Measures 55-66 contain a melodic line with dynamic markings *mp* and *f*. The staff includes a bass clef. Time signatures change from 4/4 to 3/4, 2/4, 3/4, 4/4, and 3/4.

67

Trpts

2

*f*

Measures 67-74: Bass Trombone part. Measure 67 is a whole rest. Measures 68-74 contain a melodic line with dynamic marking *f*. The staff includes a bass clef. Time signatures change from 3/4 to 5/8, 6/8, 4/4, and 3/4.

75

18

*mf*

Measures 75-96: Bass Trombone part. Measure 75 is a whole rest. Measures 76-96 contain a melodic line with dynamic marking *mf*. The staff includes a bass clef. Time signatures change from 3/4 to 4/4, 3/4, 4/4, and 3/4.

97

Ob

3

mp

Measures 97-100: Bass Trombone part. Measure 97 is a whole rest. Measures 98-100 contain a melodic line with a triplet in measure 98 and dynamic marking *mp*. The staff includes a bass clef. Time signatures change from 3/4 to 4/4, 3/4, and 4/4.

101

2

*f*

Measures 101-103: Bass Trombone part. Measures 101-103 contain a melodic line with dynamic marking *f*. The staff includes a bass clef. Time signatures change from 4/4 to 3/4 and 4/4.

## "Implausible" Symphony, I

107 10

*f*

This staff contains measures 107 through 116. It begins with a bass clef and a key signature of one flat. The time signature changes from 5/8 to 6/8, then to 1/4, 3/4, and 4/4. The music features a series of eighth and quarter notes, with a dynamic marking of *f* at the start. A thick black bar indicates a ten-measure rest at the end of the staff.

123 <sup>Hns</sup> Trom 1

*mp* *f*

This staff contains measures 123 through 128. It starts with a bass clef and a key signature of one flat. The music is marked *Hns* (Horn) and *Trom 1*. The dynamic marking is *mp* (mezzo-piano), which changes to *f* (forte) towards the end of the staff.

129 14 <sup>Hns</sup>

*f*

This staff contains measures 129 through 138. It begins with a ten-measure rest, indicated by a thick black bar. The music then resumes with a bass clef and a key signature of one flat. The time signature changes to 5/4 and 5/8. The dynamic marking is *f* (forte).

147 4 rit. 2

This staff contains measures 147 through 156. It starts with a bass clef and a key signature of one flat. The time signature changes from 6/8 to 1/4, 2/4, and 4/4. The music features a series of eighth and quarter notes. The dynamic marking is *f* (forte). A thick black bar indicates a four-measure rest, followed by a two-measure rest marked *rit.* (ritardando).

"Implausible" Symphony, I

Bass Trombone

IV

♩ = 55

2 2 3

5/4 4/4 3/4 4/4 3/4 5/4 4/4

12 2

3/4 4/4 5/4 3/4 4/4 3/4 5/4

20 2 2 2

4/4 3/4 5/4 4/4 3/4 4/4 5/4

30 2 3

4/4 3/4 5/4 4/4 3/4 5/4 4/4

40 2 3 Trom 1

5/4 4/4 3/4 4/4 3/4 4/4

47

4/4 3/4 5/4 3/4 4/4

53 2 2 2 41 f

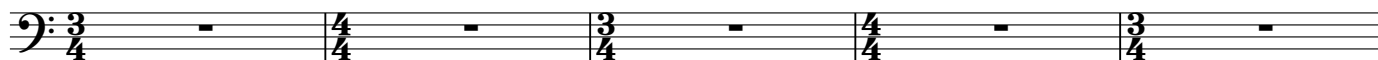
3/4 4/4 3/4 4/4 3/4 4/4 3/4

103 2 2

4/4 3/4 4/4 5/4 13/8 6/4 5/4

## Bass Trombone

112



117

